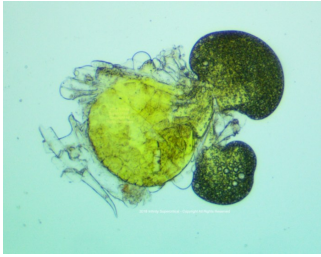


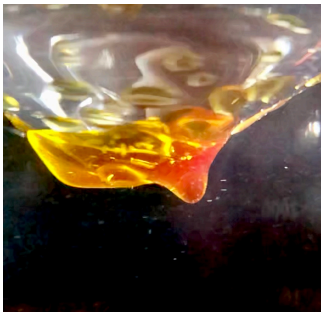
Extraction Processors Strategy

Cell Lysis Using Water



Using hydrodynamic cavitation, a water jet splits open the plant cell.

Oil Separation



The system can be tuned on the fly, to adjust solubility and separate oil from water

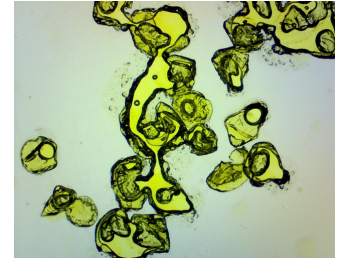
The current demand in the midwest is for full spectrum hemp cbd oil. This methodology is focussed on the least expensive way to get into the extraction business, with the highest returns. This is typically ethanol, which has high consumable costs, poor extract (no terpenes) and lower CBD yield. The high cost of pure ethanol consumable, can pay for a water extraction system in a year.

It is estimated that the Wisconsin hemp flower harvest alone in 2019 will be 1-3 million pounds in September.

A new method of extraction, using water as the solvent and hydrodynamic cavitation, may allow industrial processing to make large returns on investments, while quickly and efficiently extracting a full spectrum hemp cbd oil.

Market advantage is in developing economies of scale processing with low operation costs.

Full Spectrum Hemp CBD Oil



Water extraction produces FSHO right out of the machine process.

Fast Return on Investment



Our industrial extractors have a fast payback even based on lower wholesale hemp oil or CBD prices.

PRODUCT

Hemp Extraction: Large quantities of hemp need to be extracted at harvest time to preserve the unique medicinal qualities of the plant oil.

Batch Processing: The industry currently has large batch processing systems, which limit capability.

Solvents: Most processing is focussed on using solvents like butane, ethanol, and CO2 which are expensive consumables.

Response Time: Extraction times are usually slow, and don't match market demand.

Old Technology: Current extraction systems are based on 60 year old technology.

PROFIT

Infinity Supercritical offers a full spectrum line of technologically advanced equipment.

Bulk Hemp Processing: Using water extraction, large amounts of continuous feed processing is available.

High Value Hemp Extraction: Water extraction produces full spectrum hemp cbd oil.

Large Volume: Continuous feed, push-button extraction using water. Spinning Disc Reactor (SDR) system.

Eco Extraction: SDR uses water, and the only technology in the industry to introduce eco-extraction as a green branding process.

TIME

Timing: Large market CBD demand.

Opportunity for this market exists as processors scramble to meet demand with legacy extraction systems.

Profits: While the price of CBD consumer products is high, so is the profit. As the market gets saturated, the profit margin will decline.

Green products, with environmentally friendly processing, lead to brand loyalty and set the standard for product expectations.

Market domination will be held by large, efficient, processors that result in expanding profits with economies of scale.

